

ECAT FOUNDATION

External quality Control for Assays and Tests

With a focus on Thrombosis and Haemostasis

REPORT



SURVEY 2020-L1 Lupus Anticoagulant Labcode 1309

Copyright © 2020
ECAT Foundation

Date of Issue : 25-May-2020
Survey : 2020-L1
Report : Lupus Anticoagulant

Note:

In the Survey Manual 2020 detailed information is given regarding the ECAT external quality assessment programme, including the statistical evaluation and explanation of the report.

This Survey Manual 2020 should be considered as an integral part of this survey report.

Please notice the information regarding the homogeneity of samples used and the between-laboratory variation on page 21 of the Survey Manual.

General Information**Complaints**

Any complaints regarding this survey report should be reported to the ECAT before **July 8th, 2020**. Complaints received after this date will not be taken into consideration.

Exclusion of results

Results < [value] or > [value] are excluded from the statistical analysis.

When other results are excluded from the statistical analysis, these results are placed between brackets.

Use of units

We observed several issue of improper use of units during this survey.

Lupus Anticoagulant

See comments in the respective sections.

Antiphospholipid Antibodies

Please be aware of the proper use of units. We have frequently observed the use of different units by participants using the same method, while their results are comparable. Therefore, we merged all different units per method except for CU/mL unit. For now we have corrected the units, when reported an incorrect unit for a certain method group. However it is the responsibility of the participant to use the correct units!

This report is authorized by:

Dr. M.J. van Essen-Hollestelle
Programme Expert

Note: A printed version of the actual Survey Manual is provided to all participants once a year. This manual can also be downloaded from the member section of the ECAT website.

ECAT Foundation

Director: Dr. P. Meijer
ECAT Office
P.O. Box 107
2250 AC Voorschoten, The Netherlands
phone +31 (0) 71 3030 910; fax + 31 (0) 71 3030 919
E-mail: info@ecat.nl
Website: www.ecat.nl
VAT number: NL802836872B01

Registration number with the Chamber of Commerce (KvK) Gouda : 41174102
General terms of delivery are applicable to all our services.

All rights reserved. No part of this report may be reproduced, stored in a retrieval system, or by any means, electronic, mechanical, photocopying, recording or otherwise, without prior permission from the ECAT Foundation.
Appendices are an integral part of the total report.

Lupus Anticoagulant

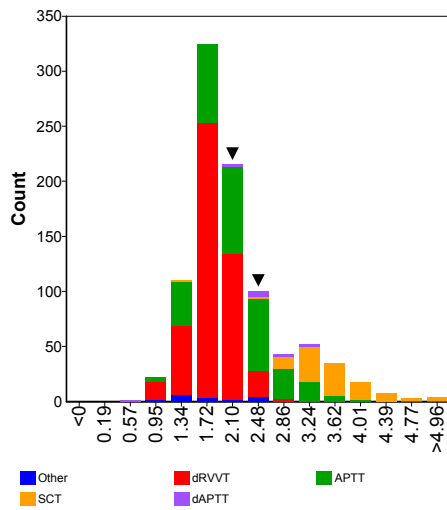
Screening

Sample No 20.62
Sample Details Plasma weak positive for Lupus Anticoagulant (LA Ratio approx. 1.6)
Prior Use Prior Use: None
Unit Units: Ratio
Expiry Date 24-October-2021
Homogeneity 0.0 % **Homogeneity Parameter** LA ratio
Number of Participants 606
Number of Responders 544 **Response Rate** 90 %
Comments

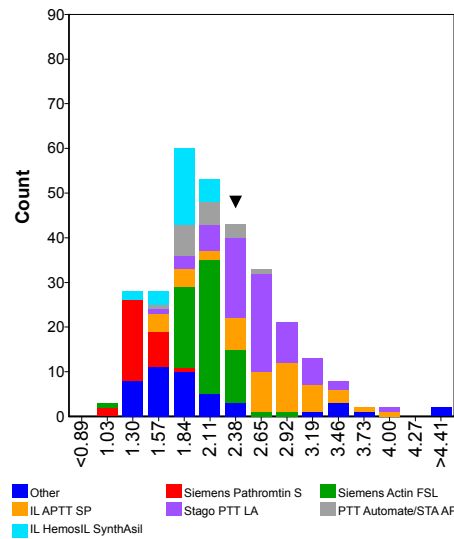
| Assay | Normal | Borderline | Prolonged | No Classification | Your result | | |
|-------|--------|------------|-----------|-------------------|-------------|-------------|-------------|
| | | | | | Screening 1 | Screening 2 | Screening 3 |
| APTT | 1 | 4 | 364 | 1 | Prolonged | | |
| dAPTT | 1 | 0 | 18 | 0 | | | |
| dPT | 1 | 0 | 7 | 0 | | | |
| dRVVT | 14 | 11 | 505 | 14 | | Prolonged | |
| KCT | 0 | 0 | 4 | 0 | | | |
| Other | 1 | 0 | 2 | 0 | | | |
| PNP | 0 | 0 | 2 | 0 | | | |
| PT | 0 | 0 | 6 | 0 | | | |
| SCT | 7 | 0 | 102 | 7 | | | |

| Ratio | n | assigned value | CV (%) | range | panel 1 | z-score | panel 2 | z-score | panel 3 | z-score |
|--------------------------------------|-----|----------------|--------|-------------|---------|---------|---------|---------|---------|---------|
| APTT | 314 | 2.13 | 27.4 | 1.00 - 5.09 | 2.29 | 0.27 | | | | |
| IL APTT SP | 48 | 2.65 | 22.1 | 1.56 - 3.90 | | | | | | |
| IL HemosIL SynthAsil | 27 | 1.86 | 9.3 | 1.39 - 2.17 | | | | | | |
| IL MixCon | 18 | 1.66 | 8.4 | 1.11 - 1.98 | | | | | | |
| Siemens Actin FS | 8 | 1.35 | | 1.22 - 2.13 | | | | | | |
| Siemens Actin FSL | 63 | 2.10 | 10.3 | 1.00 - 2.85 | 2.29 | 0.89 | | | | |
| Siemens Pathromtin SL | 29 | 1.40 | 7.7 | 1.13 - 1.86 | | | | | | |
| Stago PTT Automate/STA APTT | 17 | 2.04 | 14.8 | 1.70 - 2.59 | | | | | | |
| Stago PTT LA | 68 | 2.59 | 14.5 | 1.69 - 4.03 | | | | | | |
| Stagoe Staclot LA | 6 | 2.11 | | 1.51 - 2.36 | | | | | | |
| Tcoag TriniClot Automated APTT | 5 | 1.78 | | 1.71 - 1.92 | | | | | | |
| Technoclone Lupus Anticoagulant Test | 6 | 1.78 | | 1.60 - 5.09 | | | | | | |
| dAPTT | 12 | 2.49 | 21.0 | 0.65 - 3.17 | | | | | | |
| Stago PTT LA | 9 | 2.61 | | 0.65 - 3.17 | | | | | | |
| dPT | 7 | 2.28 | | 1.10 - 2.47 | | | | | | |
| dRVVT | 486 | 1.78 | 15.3 | 0.94 - 2.83 | | | 2.02 | 0.86 | | |
| BioMedica Diagnostics DVV test | 5 | 2.08 | | 1.84 - 2.24 | | | | | | |
| I.L. HemosIL dRVVT screen | 159 | 2.00 | 11.8 | 1.34 - 2.83 | | | | | | |
| I.L. LAC screen | 11 | 1.96 | 8.5 | 1.67 - 2.25 | | | | | | |
| Precision Biologic LA check | 12 | 1.14 | 8.3 | 1.03 - 1.49 | | | | | | |
| Siemens LA1 screen | 182 | 1.74 | 10.2 | 0.94 - 2.38 | | | 2.02 | 1.55 | | |
| Stago DRVVT screen | 87 | 1.62 | 8.5 | 1.25 - 2.34 | | | | | | |
| Technoclone LA Screen | 5 | 1.58 | | 1.50 - 1.70 | | | | | | |
| PT | 6 | 1.40 | | 1.30 - 1.65 | | | | | | |
| SCT | 105 | 3.55 | 13.3 | 1.29 - 5.89 | | | | | | |
| Haematex SACT Reagent | 7 | 3.65 | | 3.21 - 5.89 | | | | | | |
| IL SCT screen | 98 | 3.53 | 13.4 | 1.29 - 5.07 | | | | | | |

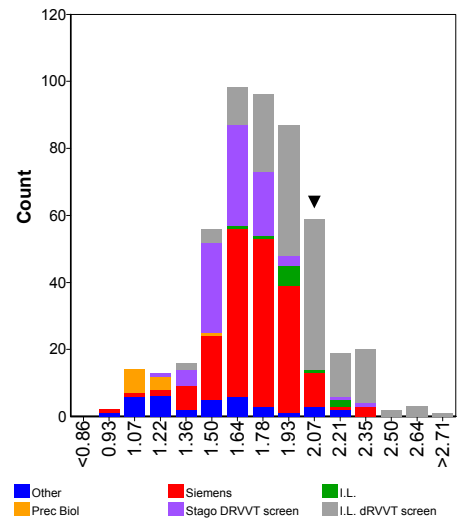
Assays



APTT



DRVVT



Comments

Several participants selected the wrong unit; ratio while the result was likely to be in seconds. Therefore all these results were excluded from the statistical analysis.

The majority of performed screening tests (approx. 98%) were classified as (borderline) prolonged. Interestingly, within the classification normal for the screening test more than 50% of the participants used the method Precision Biologic LA check. Furthermore, 57% of the participants using the method Precision Biological LA check classified the screening test as normal.

Lupus Anticoagulant

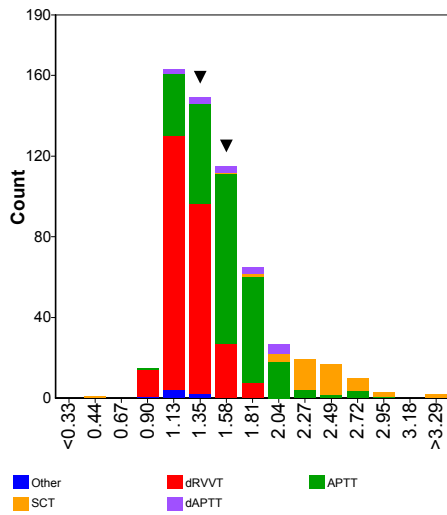
Mixing

Sample No 20.62
Sample Details Plasma weak positive for Lupus Anticoagulant (LA Ratio approx. 1.6)
Prior Use Prior Use: None
Unit Units: Ratio
Expiry Date 24-October-2021
Homogeneity 0.0 % **Homogeneity Parameter** LA ratio
Number of Participants 606
Number of Responders 388 **Response Rate** 64 %
Comments

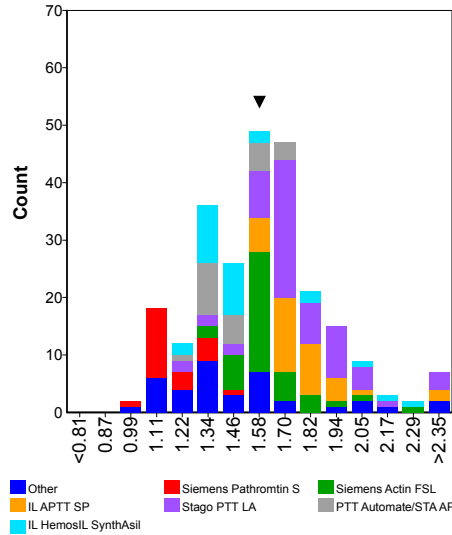
| Assay | Normal | Borderline | Prolonged | No Classification | Your result | | |
|-------|--------|------------|-----------|-------------------|-------------|-----------|----------|
| | | | | | Mixing 1 | Mixing 2 | Mixing 3 |
| APTT | 16 | 12 | 247 | 3 | Prolonged | | |
| dAPTT | 1 | 0 | 19 | 0 | | | |
| dPT | 1 | 0 | 2 | 0 | | | |
| dRVVT | 70 | 29 | 184 | 8 | | Prolonged | |
| KCT | 1 | 0 | 2 | 0 | | | |
| Other | 0 | 0 | 3 | 0 | | | |
| PT | 0 | 0 | 2 | 0 | | | |
| SCT | 2 | 0 | 48 | 2 | | | |

| Ratio | n | assigned value | CV (%) | range | panel 1 | z-score | panel 2 | z-score | panel 3 | z-score |
|--------------------------------|-----|----------------|--------|-------------|---------|---------|---------|---------|---------|---------|
| APTT | 247 | 1.58 | 17.5 | 0.98 - 2.93 | 1.57 | -0.04 | | | | |
| IL APTT SP | 35 | 1.76 | 7.8 | 1.59 - 2.93 | | | | | | |
| IL Hemosil SynthAFax | 5 | 1.24 | | 1.08 - 1.54 | | | | | | |
| IL Hemosil SynthAsil | 28 | 1.47 | 11.6 | 1.21 - 2.27 | | | | | | |
| IL MixCon | 7 | 1.60 | | 1.06 - 1.75 | | | | | | |
| Siemens Actin FSL | 40 | 1.59 | 6.3 | 1.36 - 2.24 | 1.57 | -0.20 | | | | |
| Siemens Pathromtin SL | 21 | 1.16 | 10.2 | 1.04 - 1.40 | | | | | | |
| Stago PTT Automate/STA APTT | 23 | 1.46 | 9.8 | 1.17 - 1.72 | | | | | | |
| Stago PTT LA | 62 | 1.75 | 11.4 | 1.19 - 2.78 | | | | | | |
| Tcoag TriniClot Automated APTT | 5 | 1.37 | | 1.31 - 1.41 | | | | | | |
| dAPTT | 16 | 1.66 | 21.6 | 1.09 - 2.10 | | | | | | |
| Stago PTT LA | 9 | 2.00 | | 1.52 - 2.10 | | | | | | |
| dRVVT | 268 | 1.25 | 13.4 | 0.82 - 1.83 | | | 1.26 | 0.08 | | |
| I.L. Hemosil dRVVT screen | 48 | 1.44 | 13.6 | 1.07 - 1.81 | | | | | | |
| Precision Biologic LA check | 6 | 1.01 | | 0.95 - 1.08 | | | | | | |
| Siemens LA1 screen | 123 | 1.23 | 10.0 | 0.82 - 1.83 | | | 1.26 | 0.31 | | |
| Siemens LA2 confirmation | 13 | 1.10 | 8.0 | 0.99 - 1.40 | | | | | | |
| Stago DRVVT screen | 54 | 1.23 | 10.0 | 1.03 - 1.71 | | | | | | |
| SCT | 48 | 2.39 | 12.5 | 0.39 - 5.86 | | | | | | |
| Haematex SACT Reagent | 5 | 2.26 | | 0.39 - 5.86 | | | | | | |
| IL SCT screen | 43 | 2.40 | 11.8 | 1.64 - 3.30 | | | | | | |

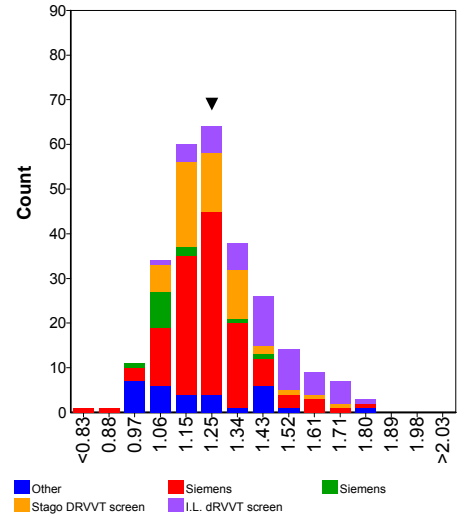
Assays



APTT



DRVVT



Comments

Several participants selected the wrong unit; ratio while the result was likely to be in seconds. Therefore all these results were excluded from the statistical analysis.

The majority of performed mixing tests (approx. 86%) were classified as (borderline) prolonged. Interestingly, 100% of the participants using the method Precision Biological LA check classified the mixing test as normal. Also, 77% of the participants using the method Siemens LA2 confirm, 20% of Siemens LA1 Screen, 39% of Siemens Pathromtin SL and 29% of Stago dRVVT screen classified the mixing test as normal.

Lupus Anticoagulant

Confirmation

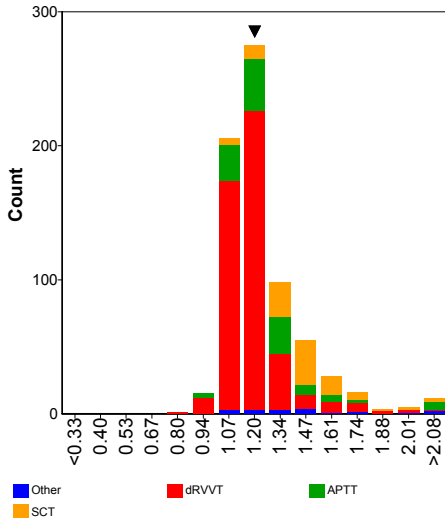
Sample No 20.62
Sample Details Plasma weak positive for Lupus Anticoagulant (LA Ratio approx. 1.6)
Prior Use Prior Use: None
Unit Units: Ratio
Expiry Date 24-October-2021
Homogeneity 0.0 % **Homogeneity Parameter** LA ratio
Number of Participants 606
Number of Responders 538 **Response Rate** 89 %
Comments

| Assay | Positive | Borderline | Negative | No Classification | Your result | | |
|-------|----------|------------|----------|-------------------|-------------|-------------|-----------|
| | | | | | Confirm 1 | Confirm 2 | Confirm 3 |
| APTT | 169 | 6 | 4 | 3 | LA Positive | | |
| dAPTT | 15 | 0 | 0 | 0 | | | |
| dPT | 5 | 0 | 3 | 0 | | | |
| dRVVT | 480 | 23 | 36 | 8 | | LA Positive | |
| Other | 5 | 0 | 0 | 0 | | | |
| PNP | 11 | 1 | 1 | 0 | | | |
| PT | 1 | 0 | 1 | 1 | | | |
| SCT | 107 | 1 | 1 | 1 | | | |

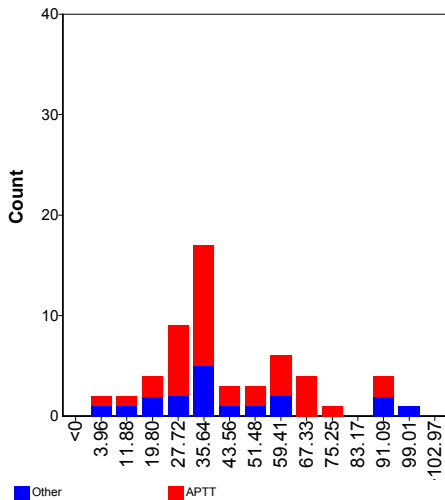
| Ratio | n | assigned value | CV (%) | range | panel 1 | z-score | panel 2 | z-score | panel 3 | z-score |
|--------------------------------------|-----|----------------|--------|-------------|---------|---------|---------|---------|---------|---------|
| APTT | 117 | 1.26 | 13.0 | 0.98 - 3.69 | 1.16 | -0.59 | | | | |
| IL Hemosil SynthAFax | 20 | 1.16 | 6.4 | 1.06 - 1.38 | | | | | | |
| IL MixCon | 19 | 1.23 | 22.4 | 1.00 - 1.70 | | | | | | |
| Siemens Actin FS | 52 | 1.24 | 7.3 | 0.98 - 2.19 | 1.16 | -0.89 | | | | |
| Stago Staclot LA | 8 | 1.44 | | 1.24 - 3.69 | | | | | | |
| Technoclone Lupus Anticoagulant Test | 6 | 1.39 | | 1.13 - 2.60 | | | | | | |
| dAPTT | 7 | 1.33 | | 1.24 - 2.12 | | | | | | |
| dPT | 7 | 1.52 | | 1.10 - 2.19 | | | | | | |
| dRVVT | 478 | 1.17 | 8.0 | 0.81 - 2.10 | | | 1.15 | -0.22 | | |
| Hyphen Biomed Hemoclot LA-C | 5 | 1.16 | | 1.04 - 1.44 | | | | | | |
| IL Hemosil dRVVT confirm | 145 | 1.20 | 7.9 | 0.96 - 2.00 | | | | | | |
| IL Hemosil LAC confirm | 22 | 1.20 | 10.3 | 1.01 - 2.10 | | | | | | |
| Life Diagnostics LA confirm | 5 | 1.07 | | 1.00 - 1.08 | | | | | | |
| Precision Biologic LA sure | 7 | 1.10 | | 0.81 - 1.25 | | | | | | |
| Siemens LA2 confirmation | 187 | 1.15 | 7.6 | 0.92 - 1.80 | | | 1.15 | -0.04 | | |
| Stago DRVVT Confirm | 80 | 1.15 | 6.2 | 1.01 - 1.81 | | | | | | |
| Technoclone LA Confirm | 7 | 1.11 | | 1.05 - 1.19 | | | | | | |
| SCT | 100 | 1.45 | 12.3 | 1.06 - 2.69 | | | | | | |
| IL Hemosil SCT confirm | 98 | 1.44 | 12.2 | 1.06 - 2.69 | | | | | | |

| Delta Seconds | n | assigned value | CV (%) | range | panel 1 | z-score | panel 2 | z-score | panel 3 | z-score |
|------------------|----|----------------|--------|-------------|---------|---------|---------|---------|---------|---------|
| APTT | 38 | 41.9 | 46.9 | 5.6 - 91.8 | | | | | | |
| Stago Staclot LA | 34 | 44.0 | 44.6 | 5.6 - 91.8 | | | | | | |
| dAPTT | 6 | 56.2 | | 16.2 - 97.5 | | | | | | |
| Stago Staclot LA | 6 | 56.2 | | 16.2 - 97.5 | | | | | | |
| PNP | 6 | 28.8 | | 4.0 - 43.0 | | | | | | |

Ratio



Delta Seconds



Comments

Several participants selected the wrong unit; ratio while the result was likely to be in seconds. Therefore all these results were excluded from the statistical analysis.

The vast majority of the performed confirmation tests (approx. 95%) were classified as borderline or positive. Interestingly, 100% of the participants using the method Hyphen Biomed Hemaclot LA-C classified the confirm test as normal. Also, 90% of the participants using the method Precision Biological LA sure and 6% of the participants using the method Siemens LA2 confirm classified the confirm test as normal.

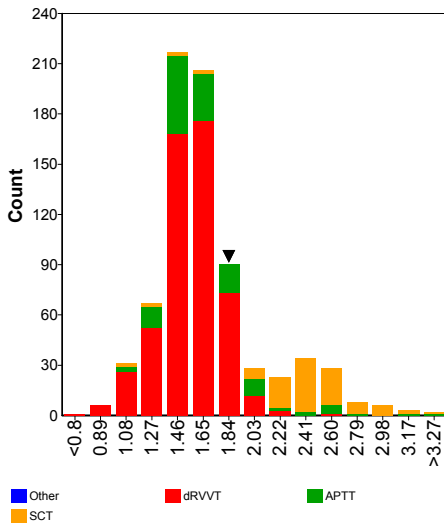
Lupus Anticoagulant

Ratio Screening/Confirmation

Sample No 20.62
Sample Details Plasma weak positive for Lupus Anticoagulant (LA Ratio approx. 1.6)
Prior Use Prior Use: None
Unit Units: Ratio
Expiry Date 24-October-2021
Homogeneity 0.0 % **Homogeneity Parameter** LA ratio
Number of Participants 606
Number of Responders 470 **Response Rate** 77.56%
Comments

| Ratio Screening/Confirmation | n | assigned value | CV (%) | range | panel 1 | z-score | panel 2 | z-score | panel 3 | z-score |
|------------------------------|-----|----------------|--------|-------------|---------|---------|---------|---------|---------|---------|
| APTT | 130 | 1.63 | 17.0 | 1.01 - 3.13 | 1.77 | 0.51 | | | | |
| dAPTT | 8 | 1.67 | | 1.42 - 2.31 | | | | | | |
| dPT | 5 | 1.61 | | 0.93 - 2.06 | | | | | | |
| dRVVT | 518 | 1.56 | 13.1 | 0.78 - 2.53 | | | 1.76 | 1.00 | | |
| SCT | 102 | 2.43 | 11.6 | 1.00 - 4.32 | | | | | | |

Assays



Lupus Anticoagulant

Final Conclusion

| Final Conclusion | Negative | Borderline | Positive | No Conclusion | Your Result |
|------------------|----------|------------|----------|---------------|-------------|
| Total | 21 | 14 | 429 | 6 | Positive |

Comments

Ratio Screen/Confirm

Several participants reported a value for the ratio screen/confirm which actually was not likely to be a ratio screen over confirm. Therefore these results were excluded from the statistical analysis.

Final conclusion

The sample used in this survey was plasma from a patient diagnosed with Lupus Anticoagulant (LA Ratio = approx. 1.6). No other types of inhibitors were present.

In total 464 participants reported a final conclusion. Of the participants who gave a final conclusion, approximately 92% classified the sample as positive. Three percent classified the sample as borderline. Thus, the vast majority of the participants correctly classified this sample as positive.

Several participants stated that there is an indication that this sample is positive for lupus anticoagulant but in real clinical practice this should be confirmed in a new sample after 12 weeks.

Some participants indicated that the presence of indirect anticoagulant or DOAC should be excluded. Furthermore some participants reported that an increased CRP level should be ruled out.

Lupus Anticoagulant

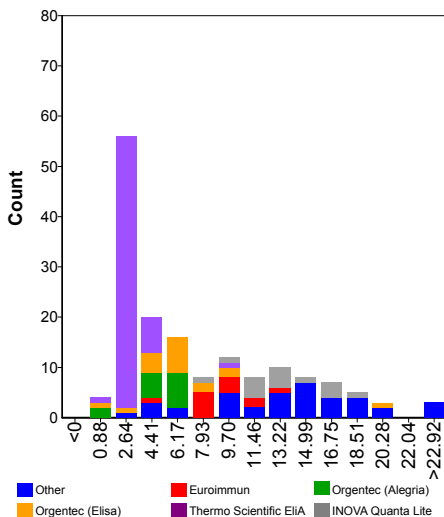
AntiCardiolipin Antibodies IgG

| | | | |
|-------------------------------|---|------------------------------|----------|
| Sample No | 20.62 | | |
| Sample Details | Plasma weak positive for Lupus Anticoagulant (LA Ratio approx. 1.6) | | |
| Prior Use | Prior Use: None | | |
| Unit | GPL, U/mL, µg/mL, CU/mL | | |
| Expiry Date | 24-October-2021 | | |
| Homogeneity | 0.0 % | Homogeneity Parameter | LA ratio |
| Number of Participants | 606 | | |
| Number of Responders | 221 | Response Rate | 36 % |
| Comments | | | |

| Classification | Negative | Borderline | Low Positive | Medium Positive | High Positive | No Conclusion |
|----------------|----------|------------|--------------|-----------------|---------------|---------------|
| Total | 159 | 28 | 27 | 5 | 0 | 2 |

| IgG | n | assigned value | CV (%) | range | Your result | z-score |
|-----------------------------------|-----|----------------|--------|-------------|-------------|---------|
| U/mL, µg/mL, GPL/MPL | 160 | 7.2 | 77.9 | 0.3 - 42.0 | | |
| Aeskulisa Diagnostic GmbH | 8 | 10.5 | | 4.2 - 16.5 | | |
| Biorad Bioplex | 7 | 14.7 | | 10.1 - 15.9 | | |
| Euroimmun | 12 | 9.1 | 22.1 | 3.6 - 14.0 | | |
| INOVA Quanta Lite | 15 | 13.4 | 23.5 | 8.2 - 19.0 | | |
| Orgentec (Alegria) | 14 | 5.0 | 20.7 | 0.3 - 6.4 | | |
| Orgentec (Elisa) | 18 | 6.3 | 37.0 | 0.9 - 20.9 | | |
| Reads | 5 | 18.0 | | 17.0 - 24.8 | | |
| Thermo Scientific EliA | 63 | 2.9 | 21.1 | 1.6 - 9.0 | | |
| CU/mL | 59 | 20.2 | 13.4 | 1.0 - 26.4 | | |
| I.L. Acustar / INOVA Quanta Flash | 58 | 20.2 | 13.6 | 1.0 - 26.4 | | |

GPL, U/mL, µg/mL



Comments

Please be aware of the proper use of units. We have frequently observed the use of different units by participants using the same method while their results are comparable. For now we have harmonised the units. However it is the participant's responsibility to use the correct units!

Lupus Anticoagulant

AntiCardiolipin Antibodies IgM

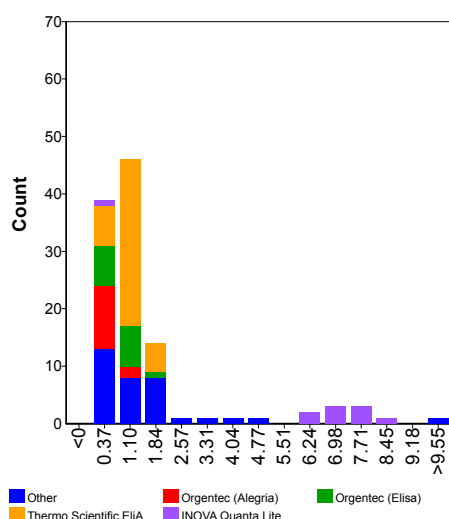
| | | | |
|-------------------------------|---|------------------------------|----------|
| Sample No | 20.62 | | |
| Sample Details | Plasma weak positive for Lupus Anticoagulant (LA Ratio approx. 1.6) | | |
| Prior Use | Prior Use: None | | |
| Unit | MPL, U/mL, µg/mL, CU/mL | | |
| Expiry Date | 24-October-2021 | | |
| Homogeneity | 0.0 % | Homogeneity Parameter | LA ratio |
| Number of Participants | 606 | | |
| Number of Responders | 200 | Response Rate | 33 % |
| Comments | | | |

| Classification | Negative | Borderline | Low Positive | Medium Positive | High Positive | No Conclusion |
|----------------|----------|------------|--------------|-----------------|---------------|---------------|
| Total | 200 | 0 | 0 | 0 | 0 | 0 |

| IgM | n | assigned value | CV (%) | range | Your result | z-score |
|-----|---|----------------|--------|-------|-------------|---------|
|-----|---|----------------|--------|-------|-------------|---------|

| IgM | n | assigned value | CV (%) | range | Your result | z-score |
|-----------------------------------|-----|----------------|--------|------------|-------------|---------|
| U/mL, µg/mL, GPL/MPL | 113 | 1.1 | 73.1 | 0.0 - 13.5 | | |
| Aeskulisa Diagnostic GmbH | 8 | 1.0 | | 0.4 - 3.4 | | |
| Biorad Bioplex | 5 | 0.3 | | 0.2 - 0.3 | | |
| INOVA Quanta Lite | 10 | 7.0 | 12.3 | 0.0 - 8.1 | | |
| Orgentec (Alegria) | 13 | 0.5 | 35.4 | 0.2 - 1.0 | | |
| Orgentec (Elisa) | 15 | 0.8 | 58.4 | 0.2 - 1.9 | | |
| Reaads | 5 | 2.0 | | 1.0 - 2.3 | | |
| Thermo Scientific EliA | 41 | 1.0 | 32.6 | 0.0 - 2.1 | | |
| CU/mL | 43 | 1.1 | 15.9 | 0.0 - 17.7 | | |
| I.L. Acustar / INOVA Quanta Flash | 43 | 1.1 | 15.9 | 0.0 - 17.7 | | |

MPL, U/mL, µg/mL



Comments

Please be aware of the proper use of units. We have frequently observed the use of different units by participants using the same method while their results are comparable. For now we have harmonised the units. However it is the participant's responsibility to use the correct units!

Lupus Anticoagulant

β2-Glycoprotein I Antibodies IgG

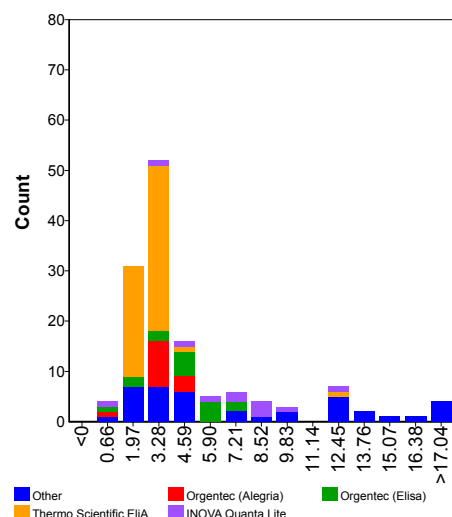
Sample No 20.62
Sample Details Plasma weak positive for Lupus Anticoagulant (LA Ratio approx. 1.6)
Prior Use Prior Use: None
Unit U, U/mL, µg/mL, CU/mL
Expiry Date 24-October-2021
Homogeneity 0.0 % **Homogeneity Parameter** LA ratio
Number of Participants 606
Number of Responders 199 **Response Rate** 33 %
Comments

| Classification | Negative | Borderline | Low Positive | Medium Positive | High Positive | No Conclusion |
|----------------|----------|------------|--------------|-----------------|---------------|---------------|
| Total | 130 | 10 | 12 | 29 | 17 | 1 |

IgG n assigned value CV (%) range Your result z-score

| | | | | | | |
|-----------------------------------|-----|------|------|-------------|--|--|
| U, U/mL, µg/mL | 136 | 3.9 | 52.7 | 0.0 - 30.0 | | |
| Aeskulisa Diagnostic GmbH | 8 | 4.3 | | 0.6 - 9.5 | | |
| Biorad Bioplex | 6 | 12.2 | | 10.1 - 14.4 | | |
| Euroimmun | 9 | 3.6 | | 1.9 - 4.0 | | |
| INOVA Quanta Lite | 11 | 7.0 | 47.9 | 0.0 - 12.7 | | |
| Orgentec (Alegria) | 13 | 3.3 | 19.5 | 1.3 - 5.0 | | |
| Orgentec (Elisa) | 16 | 4.4 | 41.4 | 0.1 - 7.0 | | |
| Thermo Scientific EliA | 57 | 2.8 | 20.0 | 1.5 - 12.8 | | |
| CU/mL | 56 | 85.5 | 20.8 | 1.1 - 129.8 | | |
| I.L. Acustar / INOVA Quanta Flash | 56 | 85.5 | 20.8 | 1.1 - 129.8 | | |

U, U/mL, µg/mL



Comments

Please be aware of the proper use of units. We have frequently observed the use of different units by participants using the same method while their results are comparable. For now we have harmonised the units. However it is the participant's responsibility to use the correct units!

Lupus Anticoagulant

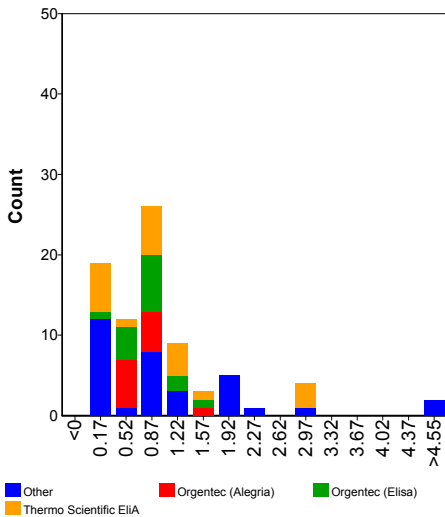
β2-Glycoprotein I Antibodies IgM

Sample No 20.62
Sample Details Plasma weak positive for Lupus Anticoagulant (LA Ratio approx. 1.6)
Prior Use Prior Use: None
Unit U, U/mL, µg/mL, CU/mL
Expiry Date 24-October-2021
Homogeneity 0.0 % **Homogeneity Parameter** LA ratio
Number of Participants 606
Number of Responders 171 **Response Rate** 28 %
Comments

| Classification | Negative | Borderline | Low Positive | Medium Positive | High Positive | No Conclusion |
|----------------|----------|------------|--------------|-----------------|---------------|---------------|
| Total | 169 | 0 | 0 | 2 | 0 | 0 |

| IgM | n | assigned value | CV (%) | Your result | z-score |
|-----------------------------------|----|----------------|--------|-------------|---------|
| U, U/mL, µg/mL | 83 | 0.9 | 74.3 | 0.0 - 7.6 | |
| Aeskulisa Diagnostoc GmbH | 8 | 1.0 | | 0.2 - 7.6 | |
| INOVA Quanta Lite | 7 | 1.3 | | 0.0 - 2.0 | |
| Orgentec (Alegria) | 12 | 0.7 | 21.4 | 0.5 - 1.5 | |
| Orgentec (Elisa) | 15 | 0.8 | 46.8 | 0.0 - 1.6 | |
| Thermo Scientific EliA | 23 | 1.2 | 93.8 | 0.0 - 2.9 | |
| CU/mL | 27 | 0.8 | 69.0 | 0.0 - 118.6 | |
| I.L. Acustar / INOVA Quanta Flash | 27 | 0.8 | 69.0 | 0.0 - 118.6 | |

U, U/mL, µg/mL



Comments

Please be aware of the proper use of units. We have frequently observed the use of different units by participants using the same method while their results are comparable. For now we have harmonised the units. However it is the participant's responsibility to use the correct units!